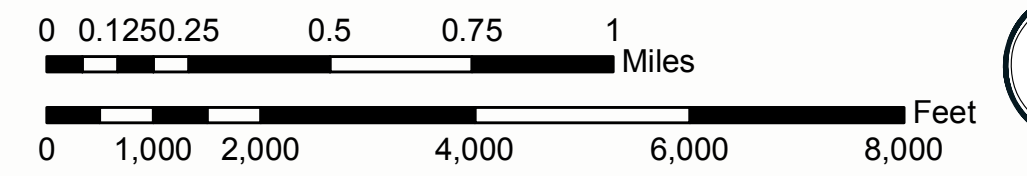
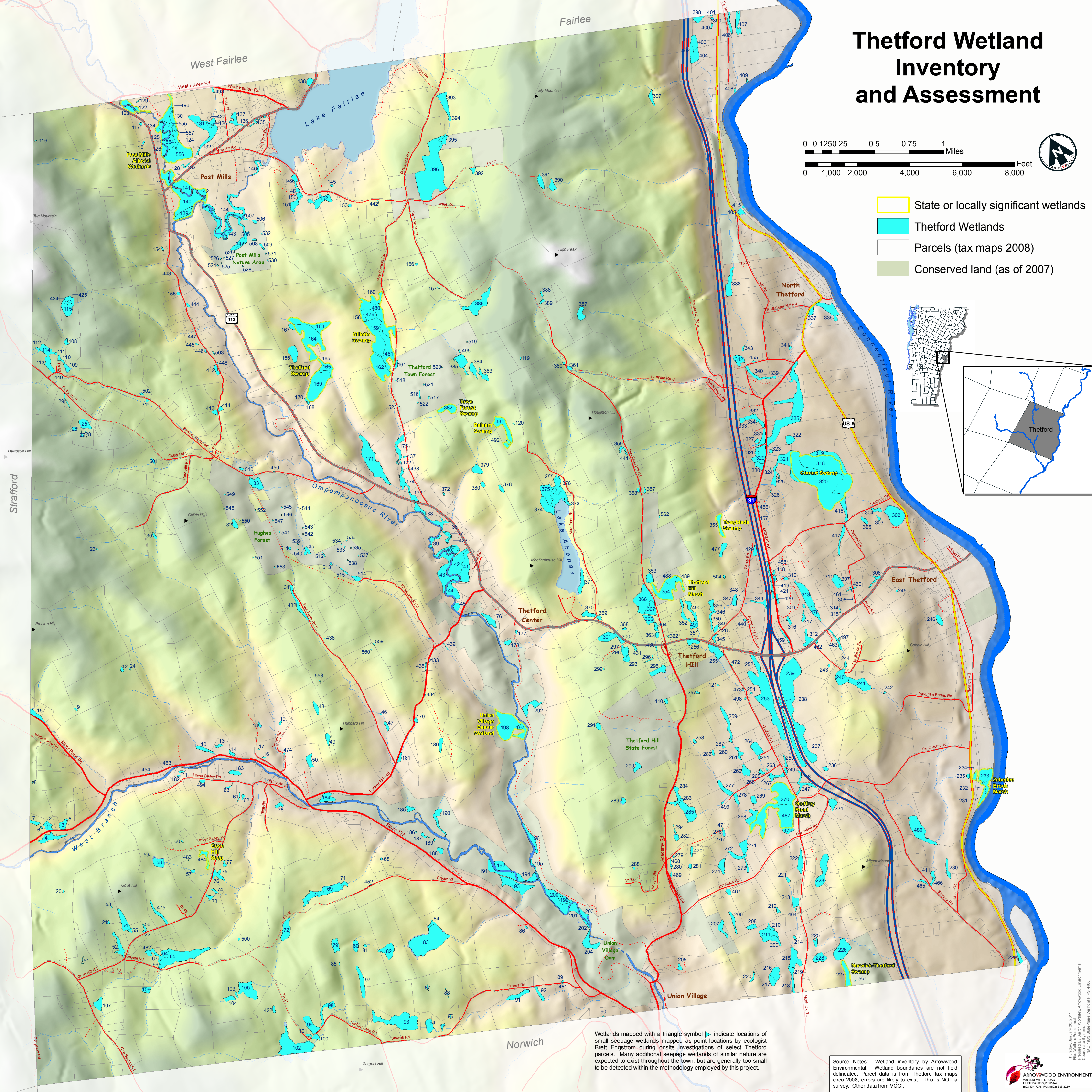
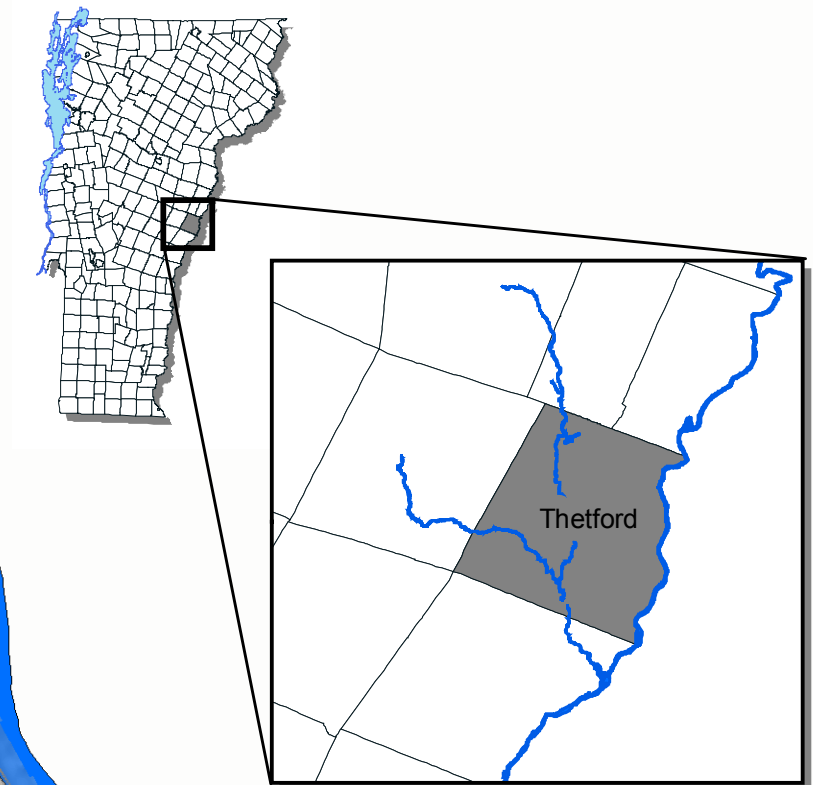


# Thetford Wetland Inventory and Assessment



- State or locally significant wetlands
- Thetford Wetlands
- Parcels (tax maps 2008)
- Conserved land (as of 2007)



Wetlands mapped with a triangle symbol ▲ indicate locations of small seepage wetlands mapped as point locations by ecologist Brett Engstrom during onsite investigations of select Thetford parcels. Many additional seepage wetlands of similar nature are expected to exist throughout the town, but are generally too small to be detected within the methodology employed by this project.

Source Notes: Wetland inventory by Arrowwood Environmental. Wetland boundaries are not field delineated. Parcel data is from Thetford tax maps circa 2008; errors are likely to exist. This is NOT a survey. Other data from VCGI.

Strafford

Norwich

Union Village

East Thetford

Thetford Center

Thetford Hill

Post Mills

West Fairlee

Fairlee

Lake Fairlee

Ompompanoosuc River

Lake Abeaki

US-4

US-91

Post Mills  
Affiliated  
Wetlands

Post Mills  
Nature Area

Willits  
Swamp

Thetford  
Swamp

Thetford  
Town Forest

Bellevue  
Swamp

Thetford  
Town Forest

Union  
Village  
Beaver  
Wetland

Thetford  
Hill  
State Forest

Hughes  
Forest

Upper  
Bailey  
Swamp

Eastley  
Swamp  
Marsh

Zscheliga  
Brook  
Marsh

Norwich-Thetford  
Swamp