

- ### LEGEND
- ◆ Bedrock Monitoring Well
 - Monitoring Well (Shallow/Deep)
 - Overburden Well/Spring
 - Post-Closure Monitoring Well Network
 - Drinking Water Supply Well
 - Staff Gauge & Surface Water
 - Soil Boring
 - ✕ Phase I Site Walk Findings
 - Parcel Boundary
 - Site Boundary
 - Extent of Former UVR Landfill
 - Stream
 - Water System Distribution Lines

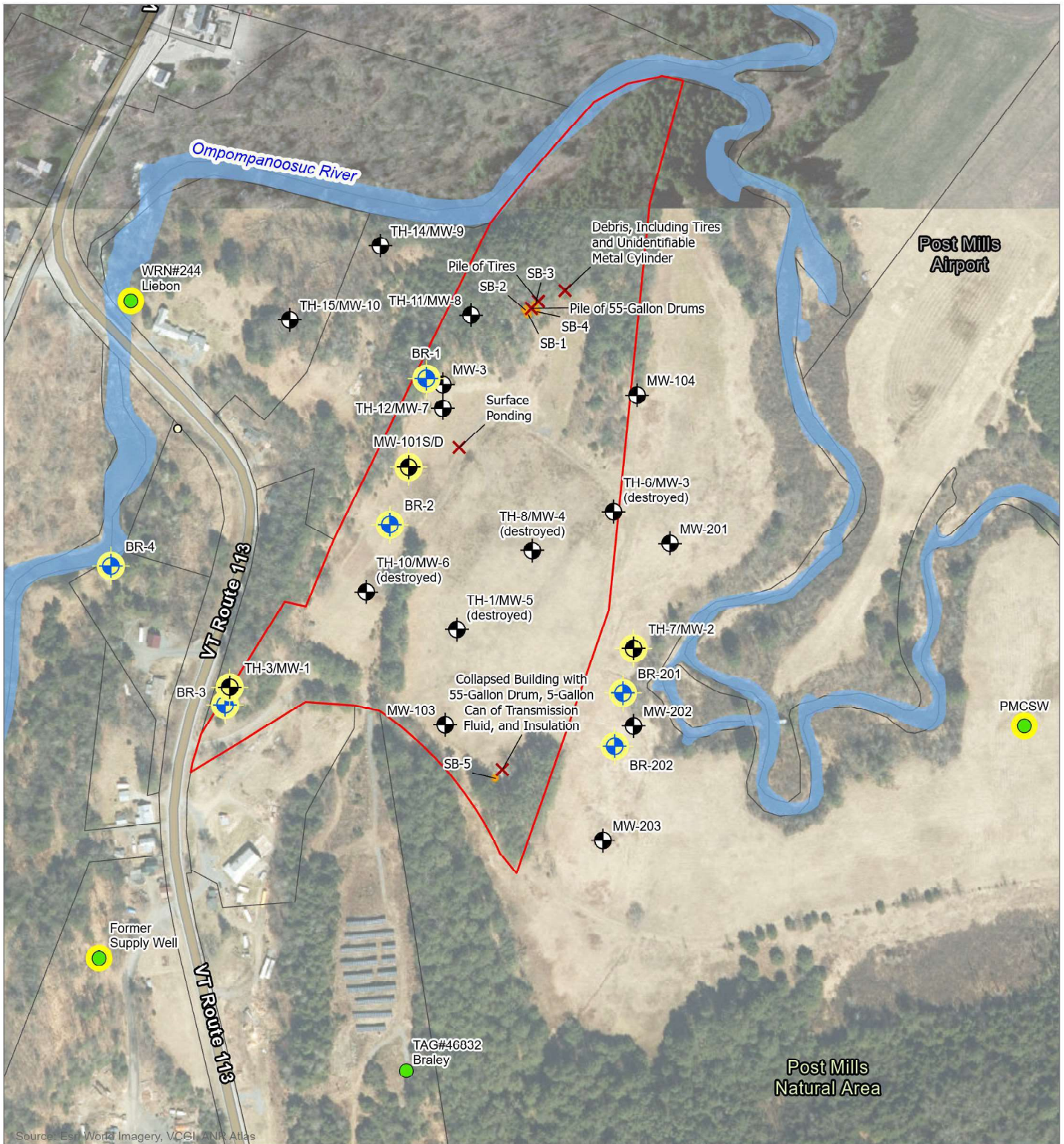
Sources:
 VCGI - Aerial Imagery, Parcel Boundary, Public Water Supply, Private Wells
 Phase I Environmental Site Assessment and Limited Subsurface Evaluation Report, Figure 2, Lincoln Applied Geology (LAG), Inc., December 13, 2001.
 Hydrogeologic Summary of the Upper Valley Regional Landfill in Post Mills, Vermont, Figure 2, Caswell, Eicher and Hill, Inc., November 30, 1995.
 Barker-Sargent Landfill Post Mills, Vermont, Landfill Layout & Sections, Sheet 1 of 3, Marshfield Engineering Services, February 9, 1981.
 Post Mills Water Association Proposed Water System Improvements, Wright Engineering, Exhibit B, 2001

#	Date	Drawn	Checked	App'd	Description
1	07/13/2021	LAG			Drawn
2	07/14/2021		SYR		Checked
3					Project No: 20-096



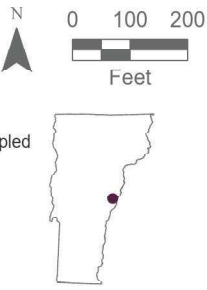
STONE ENVIRONMENTAL
 535 Stone Cutters Way / Montpelier / VT / 05602 / USA
 802.229.4541 / info@stone-env.com / www.stone-env.com

Historical Investigation Locations
 Upper Valley Regional Landfill Corporation
 7412 VT Route 113
 Thetford Vermont



LEGEND

- Parcel Boundary
- Site Boundary
- + Bedrock Monitoring Well; Post Closure Well Network - Sampled
- + Overburden Monitoring Well; Post Closure Well Network - Sampled
- Drinking Water Supply Well - Sampled
- Drinking Water Supply Well - Not Sampled
- Soil Boring
- X Phase I ESA Findings



**Figure 4: Site Map - Phase II
ESA Sample Locations**

7412 VT Route 113
Thetford, VT

Upper Valley Regional Landfill
Corporation

STONE ENVIRONMENTAL



Source: Esri World Imagery, VCGI, ANR Atlas

LEGEND

-  Parcel Boundary
-  Site Boundary
-  Overburden Well
-  Groundwater Contour (1')

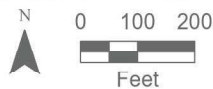


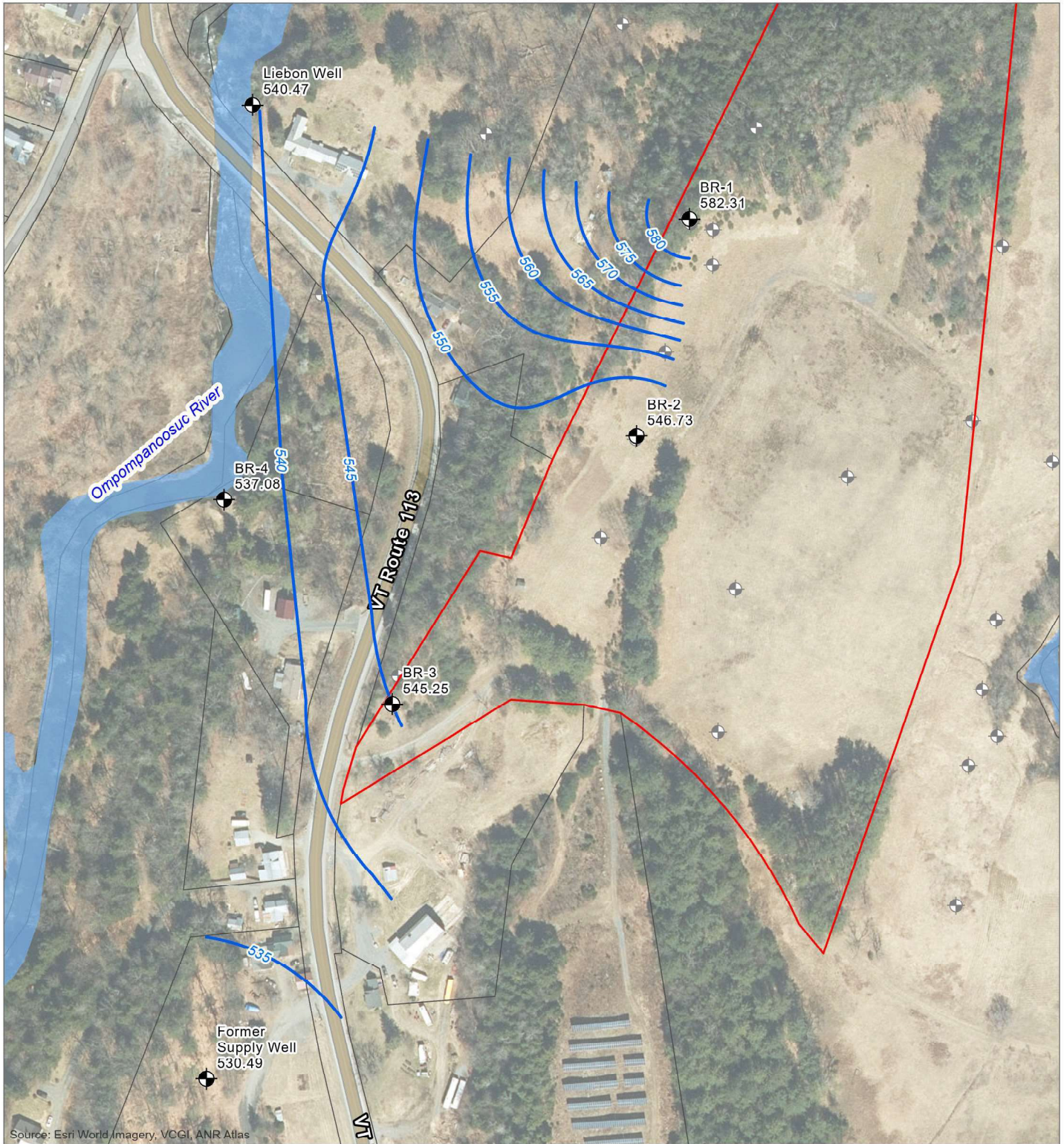
Figure 5: Overburden Potentiometric Surface Map - November 2022

7412 VT Route 113
Thetford, VT

Upper Valley Regional Landfill Corporation



Notes:
Groundwater elevations in ft above mean sea level
Relative casing elevations were obtained from a 1995 report titled "Hydrogeologic Summary of the Upper Valley Regional Landfill in Post Mills, Vermont (Town of Thetford)" prepared by Caswell, Eicher and Hill, Inc.



Source: Esri World Imagery, VCGI, ANR Atlas

LEGEND

-  Parcel Boundary
-  Site Boundary
-  Bedrock Well
-  Groundwater Contour (5')



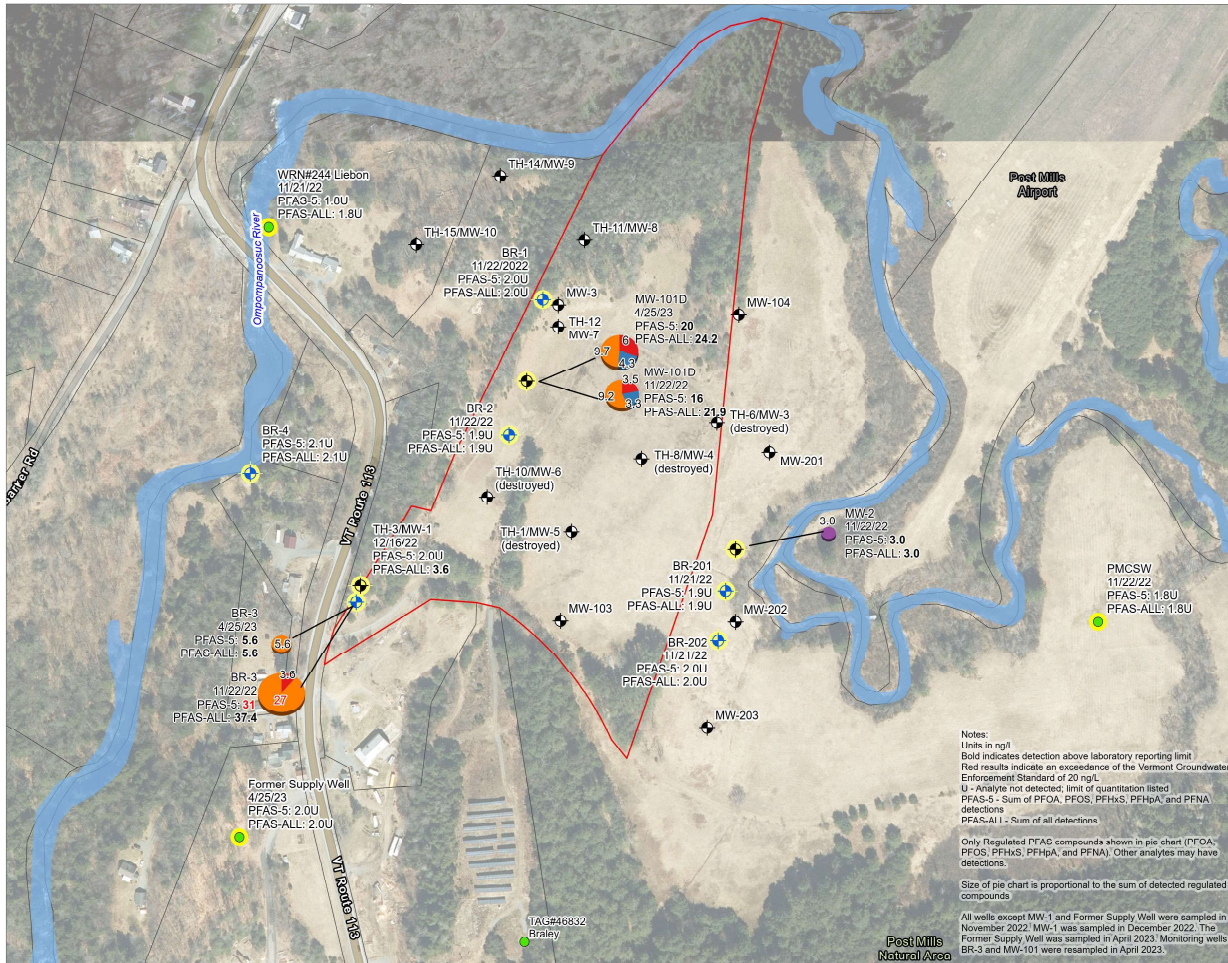
Figure 6: Bedrock Potentiometric Surface Map - April 2023

7412 VT Route 113
Thetford, VT

Upper Valley Regional Landfill Corporation



Notes:
Groundwater elevations in ft above mean sea level
Relative casing elevations were obtained from a 1995 report titled "Hydrogeologic Summary of the Upper Valley Regional Landfill in Post Mills, Vermont (Town of Thetford)" prepared by Caswell, Eicher and Hill, Inc.



LEGEND

- Site boundary
 - Well boundary
 - Parcel boundary
 - Backstop Monitoring Well - Post Closure Well Network - Sampled
 - Overburden Monitoring Well - Post Closure Well Network - Sampled
 - Distribution Monitoring Well - Not Sampled
 - Drinking Water Supply Well - Sampled
 - Drinking Water Supply Well - Not Sampled
- PFAS Concentrations**
- PFHpA
 - PFHxS
 - PFNA
 - PFOS
 - PFPA
- Total**
-

Source: Esri World Imagery, VCGI, ANR Atlas
 Path: O:\PROJ\20\20\096_VT Route 113
 Thetford\GIS\20-C96 7412 VT Route 113\20-096 7412 VT
 Route 113.aprx Figure 8 - PFAS Results Exported:
 8/7/2023 3:53 PM by jwright

Figure 8 - PFAS Concentrations in Groundwater

7412 VT Route 113
Thetford, VT

Upper Valley Regional Landfill Corporation

STONE ENVIRONMENTAL

Notes:
 Units in ng/L
 Bold indicates detection above laboratory reporting limit
 Red results indicate an exceedance of the Vermont Groundwater Enforcement Standard of 20 ng/L
 U - Analyte not detected; limit of quantitation listed
 PFAS-5 - Sum of PFOA, PFOS, PFHxS, PFHpA and PFNA detections
 PFAS-ALL - Sum of all detections
 Only Regulated PFAS compounds shown in pie chart (PFOA, PFOS, PFHxS, PFHpA, and PFNA). Other analytes may have detections.
 Size of pie chart is proportional to the sum of detected regulated compounds.
 All wells except MW-1 and Former Supply Well were sampled in November 2022; MW-1 was sampled in December 2022. The Former Supply Well was sampled in April 2023. Monitoring wells BR-3 and MW-101 were resampled in April 2023.

